

7003

SERIES

Available in
Stainless Steel
(see 7009 series)

1,250 LBS



FEATURES

KINGPIN: 5/8" diameter nut and bolt coined
RACEWAY: 5/16" diameter upper race; 1/4" diameter lower race; hardened steel load bearings
BUSHING: Roller bearings with drilled hardened steel spanner bushing and plastic side washers

AXLE&NUT: 1/2" zerk axle and lock nut (except with PB)
FINISH: Corrosion resistant bright zinc
LUBRICATION: Grease nipple in lower race
HARDENED: Work hardened double ball race
LEG SPACING: 2 1/2"

EXCELLENT FOR:

- Stock carts
- Platform trucks
- Garbage bins
- Wire shelving units
- Heavy service equipment
- Factory use
- Rugged, yet economical



OPTIONS:

- SLB Side Locking Brake
- TLB Top Locking Brake (TLB, TLB1 & TLB2 not available with the 3 1/4" wheel)
- TLB1 ALGrip
- TLB2 Top Locking Brake w/extra large pedal
- TSB Thumb Screw Brake
- UWB Universal Wheel Brake
- 1PSL 1 Position Swivel Lock
- 2PSL 2 Position Swivel Lock
- 3PSL 3 Position Swivel Lock
- 4PSL 4 Position Swivel Lock without wings (welded)
- 4PSLN 4 Position Swivel Lock with wings (demountable)
- BB Ball Bearing
- BR Bronze Bearing
- DB Delrin Bearing
- NB Nylon Roller Bearing
- PB Precision Ball Bearing
- RBC Caged Roller Bearing
- C Raceway Seal
- DW Double Welding
- OH Special Overall Height
- SSW Steel Side Washer
- SWH Heat-treated Side Washer
- TG Thread Guards
- Z Zerk in Wheel

FINISHES:

- 70?A Antique
- 70?PB Polished Brass
- 70?1 Brass
- 70?2 Chrome
- 70?4 Black

Inquiries on other finishes welcome

SPECIAL:

Custom plates, stems & overall heights available

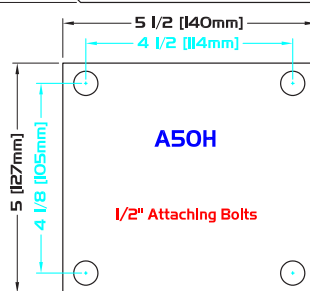
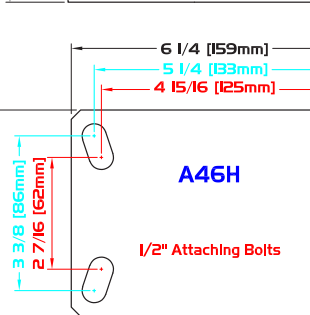
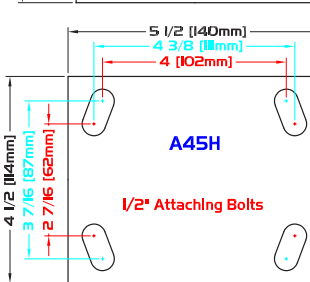
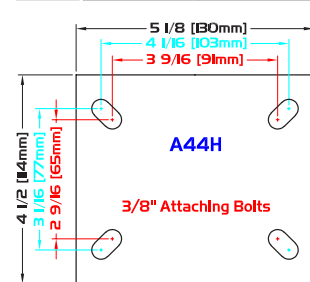
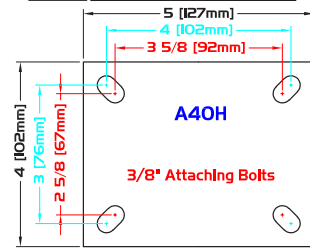
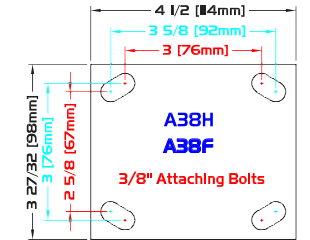


WHEEL		CASTER				PART NUMBER				
Diameter	Tread Width	Capacity Lbs.	Bearing Type	Swivel Radius	Overall Height	Wheel Type	Swivel	Caster Weight (lbs)	Rigid	Caster Weight (lbs)
3 1/4"	2"	700	Roller	2 3/4"	4 7/8"	Phenolic	S7033-***-PH-RB	4.40	R7033-***-PH-RB Standard Top Plate is A38H	2.97
4"	2"	400	Roller	3 9/16"	5 5/8"	Moldon Alum. Rubber	S7043-***-MAR-RB	4.99	R7043-***-MAR-RB	3.11
		400	Roller			Moldon Rubber	S7043-***-MR-RB	6.49	R7043-***-MR-RB	4.61
		400	Roller			ProTech™ Crown	S7043-***-PRO-RB	4.49	R7043-***-PRO-RB	2.61
		550	Roller			Polyolefin	S7043-***-POX-RB	4.21	R7043-***-POX-RB	2.33
		600	Roller			High Temp Phenolic (475°)	S7043-***-HTPH-RB	5.20	R7043-***-HTPH-RB	3.31
		700	Roller			Moldon Poly. Urethane	S7043-***-MPU-RB	4.57	R7043-***-MPU-RB	2.69
		700	Roller			Solid Steel	S7043-***-SS-RB	6.39	R7043-***-SS-RB	4.51
		750	Roller			ALTHane™	S7043-***-ALT-RB	4.41	R7043-***-ALT-RB	2.53
		800	Roller			Lava™	S7043-***-LV-RB	4.47	R7043-***-LV-RB	2.59
		800	Roller			Moldon Alum. Urethane	S7043-***-MAU-RB	4.79	R7043-***-MAU-RB	2.91
		800	Roller			Phenolic	S7043-***-PH-RB	4.80	R7043-***-PH-RB	2.92
		800	Roller			RollX™	S7043-***-RX-RB	4.42	R7043-***-RX-RB	2.54
		800	Roller			Moldon Urethane	S7043-***-UR-RB	6.09	R7043-***-UR-RB	4.21
		800	Roller			Moldon Urethane Crown	S7043-***-URC-RB	7.23	R7043-***-URC-RB	4.33
900	Roller	Lava™-WOW	S7043-***-LVW-RB	4.68	R7043-***-LVW-RB	2.80				
900	Precision	Precision	S7043-***-PTN-PB	4.72	R7043-***-PTN-PB	2.83				
1,000	Roller	Roller	S7043-***-NYNW-RB	4.57	R7043-***-NYNW-RB	2.69				
1,000	Roller	Roller	S7043-***-URB	4.61	R7043-***-URB	2.73				
1,000	Precision	Precision	S7043-***-UG-PB	4.61	R7043-***-UG-PB	2.72				
1,000	Roller	Roller	S7043-***-UGW-RB	4.61	R7043-***-UGW-RB	2.73				
1,000	Roller	Roller	S7043-***-VGRB	7.41	R7043-***-VGRB	5.53				
1,250	Roller	Roller	S7043-***-RXW-RB	4.68	R7043-***-RXW-RB	2.80				
5"	2"	350	Ball	4 1/4"	6 1/2"	Alum. Rubber Grey	S7053-***-ARG-BB	5.74	R7053-***-ARG-BB	3.79
		350	Roller			Soft Rubber	S7053-***-SR-RB	5.72	R7053-***-SR-RB	3.81
		425	Roller			ProTech™ Crown	S7053-***-PRO-RB	4.93	R7053-***-PRO-RB	3.02
		450	Roller			Moldon Rubber	S7053-***-MR-RB	6.61	R7053-***-MR-RB	4.70
		500	Roller			Moldon Alum. Rubber	S7053-***-MAR-RB	5.39	R7053-***-MAR-RB	3.48
		650	Roller			Polyolefin	S7053-***-POX-RB	4.44	R7053-***-POX-RB	2.53
		750	Roller			High Temp Phenolic (475°)	S7053-***-HTPH-RB	5.49	R7053-***-HTPH-RB	3.57
		800	Roller			Lava™	S7053-***-LV-RB	4.78	R7053-***-LV-RB	2.87
		900	Roller			Moldon Poly. Urethane	S7053-***-MPU-RB	5.17	R7053-***-MPU-RB	3.26
		950	Roller			ALTHane™	S7053-***-ALT-RB	4.79	R7053-***-ALT-RB	2.88
		1,000	Roller			Phenolic	S7053-***-PH-RB	5.39	R7053-***-PH-RB	3.48
		1,000	Precision			Precision	S7053-***-PTN-PB	5.64	R7053-***-PTN-PB	3.72
		1,000	Roller			RollX™	S7053-***-RX-RB	4.73	R7053-***-RX-RB	2.82
		1,000	Roller			Solid Steel	S7053-***-SS-RB	7.43	R7053-***-SS-RB	5.52
		1,000	Roller			Envirothane™	S7053-***-URB	5.19	R7053-***-URB	3.28
		1,000	Precision			Precision	S7053-***-UG-PB	5.25	R7053-***-UG-PB	3.32
		1,000	Roller			Roller	S7053-***-UGW-RB	5.19	R7053-***-UGW-RB	3.28
		1,050	Roller			Roller	S7053-***-MAU-RB	5.29	R7053-***-MAU-RB	3.38
1,100	Roller	Roller	S7053-***-LVW-RB	5.09	R7053-***-LVW-RB	3.18				
1,200	Roller	Roller	S7053-***-NYNW-RB	5.03	R7053-***-NYNW-RB	3.12				
1,200	Roller	Roller	S7053-***-URB	6.53	R7053-***-URB	5.32				
1,200	Roller	Roller	S7053-***-URC-RB	7.23	R7053-***-URC-RB	4.62				
1,250	Roller	Roller	S7053-***-DIC-RB	8.01	R7053-***-DIC-RB	6.10				
1,250	Roller	Roller	S7053-***-RXW-RB	5.09	R7053-***-RXW-RB	3.18				
1,250	Roller	Roller	S7053-***-VGRB	8.45	R7053-***-VGRB	6.54				

STANDARD SWIVEL PLATE: **A38H**
STANDARD RIGID PLATE: **A38F**

H - Plate Thickness: 1/4"
F - Plate Thickness: 5/32"

PLATE DIAGRAMS



WHEEL		CASTER		PART NUMBER						
Diameter	Tread Width	Capacity Lbs.	Bearing Type	Swivel Radius	Overall Height	Wheel Type	Swivel	Caster Weight (lbs)	Rigid	Caster Weight (lbs)
6"	2"	275	Precision	5"	7 1/2"	Flat Free	S7063-***-FFC-PBB	5.34	R7063-***-FFC-PBB	4.43
		450	Ball			Balloon Cushion Rubber Grey	S7063-***-BARG-BB	6.26	R7063-***-BARG-BB	4.22
		450	Roller			ProTech™ Crown	S7063-***-PRO-RB	5.41	R7063-***-PRO-RB	3.42
		500	Roller			Moldon Alum. Rubber	S7063-***-MAR-RB	6.09	R7063-***-MAR-RB	4.10
		550	Roller			Moldon Rubber	S7063-***-MR-RB	7.77	R7063-***-MR-RB	5.78
		600	Roller			ProTech™ Flat	S7063-***-PROF-RB	5.41	R7063-***-PROF-RB	3.42
		800	Roller			Polyolefin	S7063-***-POX-RB	4.78	R7063-***-POX-RB	2.79
		900	Roller			High Temp Phenolic (475°)	S7063-***-HTPH-RB	6.47	R7063-***-HTPH-RB	4.47
		900	Roller			Moldon Poly. Urethane	S7063-***-MPU-RB	5.87	R7063-***-MPU-RB	3.88
		950	Precision			Envirothane™ Grey Crowned	S7063-***-UGC-PB	5.77	R7063-***-UGC-PB	3.76
		1,000	Precision			ProThane™	S7063-***-PTN-PB	6.43	R7063-***-PTN-PB	4.43
		1,100	Roller			Lava™	S7063-***-LV-RB	5.18	R7063-***-LV-RB	3.19
		1,100	Roller			Envirothane™	S7063-***-U-RB	6.05	R7063-***-U-RB	4.06
		1,100	Precision			Envirothane™ Grey - PB	S7063-***-UG-PB	5.82	R7063-***-UG-PB	3.81
		1,100	Roller			Envirothane™ Grey-WOW-RB	S7063-***-UGW-RB	6.05	R7063-***-UGW-RB	4.06
		1,150	Roller			ALThane™	S7063-***-ALT-RB	5.52	R7063-***-ALT-RB	3.53
		1,150	Roller			ALThane™-WOW	S7063-***-ALTWOW-RB	5.52	R7063-***-ALTWOW-RB	3.53
		1,200	Roller			Lava™-WOW	S7063-***-LWV-RB	5.71	R7063-***-LWV-RB	3.59
		1,200	Roller			Moldon Alum. Urethane	S7063-***-MAU-RB	6.05	R7063-***-MAU-RB	4.06
		1,200	Roller			Phenolic	S7063-***-PH-RB	6.37	R7063-***-PH-RB	4.38
1,200	Roller	RollX™	S7063-***-RX-RB	5.13	R7063-***-RX-RB	5.28				
1,200	Roller	Solid Steel	S7063-***-SS-RB	8.75	R7063-***-SS-RB	6.76				
1,250	Roller	Ductile Iron Crowned	S7063-***-DIC-RB	9.21	R7063-***-DIC-RB	7.22				
1,250	Roller	Nyrol™	S7063-***-NYNW-RB	5.68	R7063-***-NYNW-RB	3.69				
1,250	Precision	RollX™-WOW-PB	S7063-***-RXW-PB	6.00	R7063-***-RXW-PB	3.88				
1,250	Roller	RollX™-WOW	S7063-***-RXW-RB	5.71	R7063-***-RXW-RB	3.59				
1,250	Roller	Moldon Urethane	S7063-***-UR-RB	8.23	R7063-***-UR-RB	6.24				
1,250	Roller	Moldon Urethane Crown	S7063-***-URC-RB	7.64	R7063-***-URC-RB	5.65				
1,250	Roller	V Groove	S7063-***-VG-RB	9.87	R7063-***-VG-RB	7.88				
8"	2"	280	Precision	6 1/2"	9 1/2"	Flat Free	S7083-***-FFC-PBB	5.70	R7083-***-FFC-PBB	3.50
		550	Ball			Balloon Cushion Rubber Grey	S7083-***-BARG-BB	8.12	R7083-***-BARG-BB	5.90
		600	Roller			Moldon Alum. Rubber	S7083-***-MAR-RB	7.27	R7083-***-MAR-RB	5.08
		600	Roller			Moldon Rubber	S7083-***-MR-RB	9.89	R7083-***-MR-RB	7.70
		600	Roller			ProTech™ Crown	S7083-***-PRO-RB	6.58	R7083-***-PRO-RB	4.39
		675	Roller			ProTech™ Flat	S7083-***-PROF-RB	6.54	R7083-***-PROF-RB	4.35
		900	Roller			Polyolefin	S7083-***-POX-RB	5.56	R7083-***-POX-RB	3.37
		1,000	Roller			Moldon Poly. Urethane	S7083-***-MPU-RB	6.73	R7083-***-MPU-RB	4.54
		1,100	Roller			High Temp Phenolic (475°)	S7083-***-HTPH-RB	8.11	R7083-***-HTPH-RB	5.91
		1,100	Precision			Envirothane™ Grey Crowned	S7083-***-UGC-PB	7.29	R7083-***-UGC-PB	5.08
		1,200	Roller			ALThane™	S7083-***-ALT-RB	6.41	R7083-***-ALT-RB	4.22
		1,200	Roller			Lava™	S7083-***-LV-RB	6.30	R7083-***-LV-RB	4.11
		1,200	Precision			ProThane™	S7083-***-PTN-PB	8.26	R7083-***-PTN-PB	6.06
		1,200	Roller			Envirothane™	S7083-***-U-RB	7.35	R7083-***-U-RB	5.16
		1,200	Precision			Envirothane™ Grey - PB	S7083-***-UG-PB	7.23	R7083-***-UG-PB	5.02
		1,200	Roller			Envirothane™ Grey-WOW-RB	S7083-***-UGW-RB	7.35	R7083-***-UGW-RB	5.16
		1,250	Roller			Lava™-WOW	S7083-***-LWV-RB	6.66	R7083-***-LWV-RB	4.47
		1,250	Roller			Moldon Alum. Urethane	S7083-***-MAU-RB	7.79	R7083-***-MAU-RB	5.60
		1,250	Roller			Nyrol™	S7083-***-NYNW-RB	6.86	R7083-***-NYNW-RB	4.67
		1,250	Roller			Phenolic	S7083-***-PH-RB	8.01	R7083-***-PH-RB	5.82
1,250	Roller	RollX™	S7083-***-RX-RB	6.25	R7083-***-RX-RB	4.06				
1,250	Roller	RollX™-WOW	S7083-***-RXW-RB	6.66	R7083-***-RXW-RB	4.47				
1,250	Roller	Semi Steel	S7083-***-SS-RB	11.45	R7083-***-SS-RB	9.26				
1,250	Roller	Moldon Urethane	S7083-***-UR-RB	10.61	R7083-***-UR-RB	8.42				
1,250	Roller	Moldon Urethane Crown	S7083-***-URC-RB	10.17	R7083-***-URC-RB	7.98				
1,250	Roller	V Groove	S7083-***-VG-RB	14.55	R7083-***-VG-RB	12.36				

* Caster weight and OH based on Plate

* See stem options for overall height (OH) differences

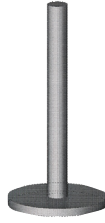
STEMS

STANDARD THREADED LENGTH: 4"
 STANDARD ROUND LENGTH: 4"
 STANDARD METRIC LENGTH: 4"

CUSTOM DIAMETERS: any
 STANDARD LENGTHS: any



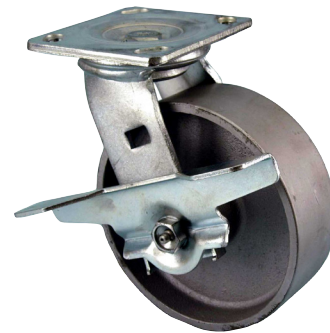
Threaded Stem



Round Stem



Metric Stem



THREADED STEMS +/-0.00" [0mm] To Std OH

***	DIAMETER	LENGTH	TYPE
1/2-13X4HO	1/2"	4"	NC
5/8-11X4	5/8"	4"	NC
3/4-10X4	3/4"	4"	NC
7/8-9X4	7/8"	4"	NC
1-8X4	1"	4"	NC

ROUND STEMS +/-0.00" [0mm] To Std OH

***	DIAMETER	LENGTH	TYPE
500 X 4	1/2"	4"	Plain
625 X 4	5/8"	4"	Plain
750 X 4	3/4"	4"	Plain
875 X 4	7/8"	4"	Plain
1.000 X 4	1"	4"	Plain
1.375 X 4	1 3/8"	4"	Plain

METRIC STEMS +/-0.00" [0mm] To Std OH

***	DIAMETER	THREAD SIZE	LENGTH
M12-1.75X4	12mm	1.75	4"
M14-2X4	14mm	2.0	4"
M16-2X4	16mm	2.0	4"
M18-2.5X4	18mm	2.5	4"
M20-2.5X4	20mm	2.5	4"
M22-2.5X4	22mm	2.5	4"
M24-3X4	24mm	3.0	4"
M27-3X4	27mm	3.0	4"