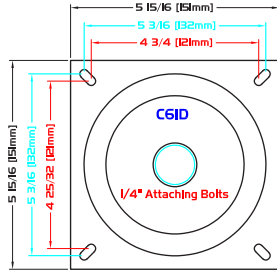
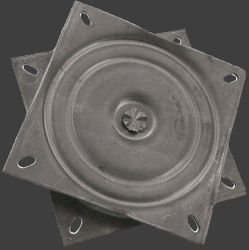
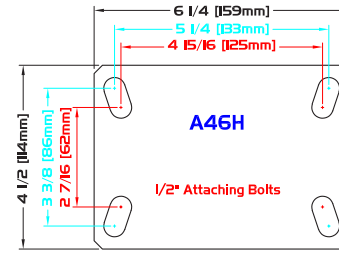


SWIVEL PLATES

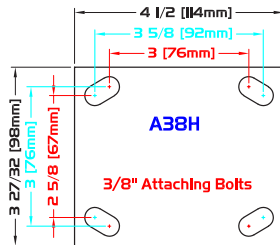
SWIVEL PLATE-6X6



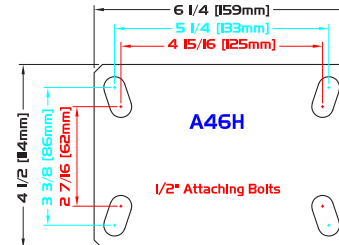
SWIVEL PLATE-6800-A46H



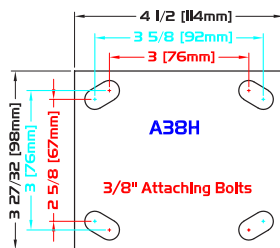
SWIVEL PLATE-7000-A38H



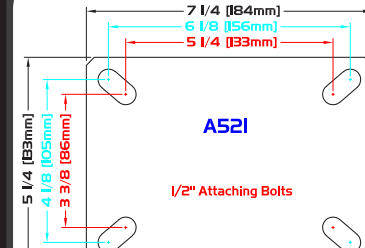
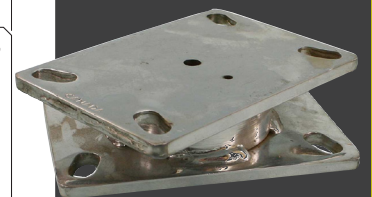
SWIVEL PLATE-TW-A46H



SWIVEL PLATE-TOR-A38H



SWIVEL PLATE-TY-A52I



SPECIFICATIONS

PART NUMBER

| Plate | Capacity Lbs. | Overall Height | Series | Part Number | Shipping Weight (Lbs.) |
|-------------|----------------|--------------------|-----------------|---|------------------------|
| C61D | 300 | 15/16" | - | SWIVEL PLATE-6X6 | 2.40 |
| A38H | 1,250 1,500 | 1 3/32" 1 7/16" | 7000 Tornado | SWIVEL PLATE-7000-A38H SWIVEL PLATE-TOR-A38H | 3.25 3.75 |
| A46H | 1,500 2,000 | 1 1/8" 1 7/16" | 6800 Twister | SWIVEL PLATE-6800-A46H SWIVEL PLATE-TW-A46H | 5.25 5.25 |
| A52I | 3,500 | 1 5/8" | Typhoon | SWIVEL PLATE-TY-A52I | 9.25 |